



LZ Growers

BudGenius® Strain Report™

BudGenius® StrainID: BG0010001EFD8
<http://budgeni.us/49N>

Medical Cannabis Test Results

We certify that all testing has been completed utilizing appropriate equipment to report accurate THC, CBD, CBN ratings on this strain. BudGenius® has taken into consideration the natural variances of compounds throughout the marijuana plant.

Banana Kush Hash

By LZ Growers

35.30% ^{THCd9} **3.41% CBD**
2.13% CBN

Valid Thru: Jun 26, 2012

Location: California

Genetic type: Indica

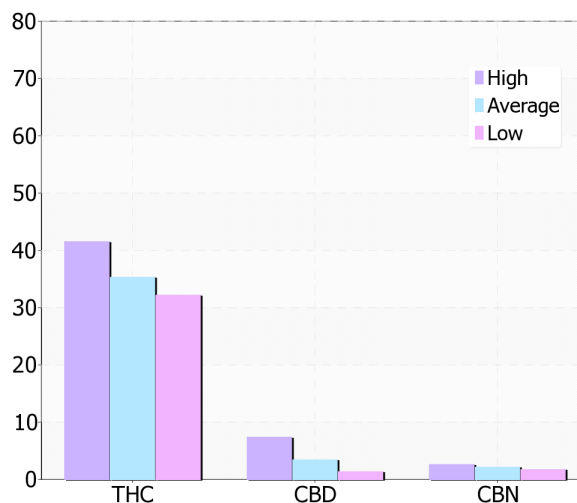
Grow Method: Indoor

Organic: Unknown

Pesticide Analysis

Compound Name	PPM (ug/g)	Analysis
Fipronil	0.00	SAFE
Lambda-Cyhalothrin	0.00	SAFE
Bifenthrin Isomers	0.00	SAFE
Beta-Cyfluthrin Isomers	0.00	SAFE
Permethrin Isomer 1	0.00	SAFE
Permethrin Isomer 2	0.00	SAFE
Cypermethrin Isomer 1	0.00	SAFE
Cypermethrin Isomer 2	0.00	SAFE
Cypermethrin Isomer 3	0.00	SAFE

Cannabinoid Analysis



Pharmacological Effects Analysis

This medicine is recommended for:

- Mood Alteration
- Sleep Aid
- Pain Relief
- Appetite Stimulation

**Please apply this medicine carefully and sparingly.
This is a concentrated dose.**

Thank you for having your product tested by BudGenius®.

Please remember to visit us online at <http://www.budgenius.com> and log into your account to view further ratings that your patients have reported about your products. You will also be able to send links, tweets, post on Facebook, and much more through the BudGenius® software. BudGenius® puts the dispensary in direct communication with their patients and experiences..