



Santa Fe Compassion & BudGenius® Strain Report™

BudGenius® StrainID: BG0010001E7C3
<http://budgeni.us/2GV>

Medical Cannabis Test Results

We certify that all testing has been completed utilizing appropriate equipment to report accurate THC, CBD, CBN ratings on this strain. BudGenius® has taken into consideration the natural variances of compounds throughout the marijuana plant.

Lemon Bar

By Santa Fe Compassion &

78.66mg ^{THCd9} **9.67mg** **CBD**
49.59mg **CBN**

Valid Thru: Apr 13, 2011

Location: California

Genetic type: Indica

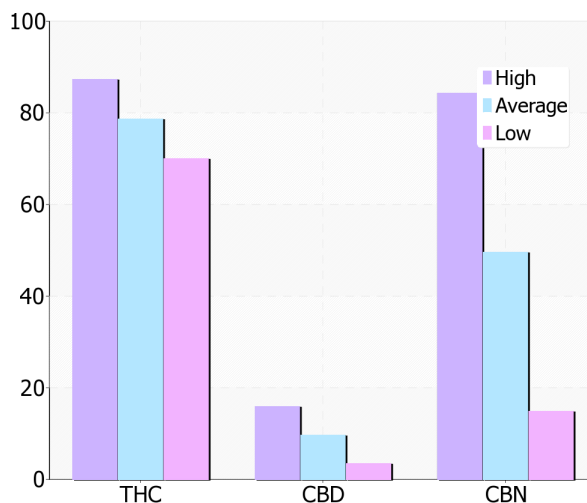
Grow Method: Indoor

Organic: Yes

Pesticide Analysis

Compound Name	PPM (ug/g)	Analysis
Fipronil	0.00	SAFE
Lambda-Cyhalothrin	0.00	SAFE
Bifenthrin Isomers	0.00	SAFE
Beta-Cyfluthrin Isomers	0.00	SAFE
Permethrin Isomer 1	0.00	SAFE
Permethrin Isomer 2	0.00	SAFE
Cypermethrin Isomer 1	0.00	SAFE
Cypermethrin Isomer 2	0.00	SAFE
Cypermethrin Isomer 3	0.00	SAFE

Cannabinoid Analysis



Pharmacological Effects Analysis

This medicine is recommended for:

- **Mood Alteration**
- **Sleep Aid**
- **Pain Relief**
- **Anxiety Relief**
- **Appetite Stimulation**

BudGenius® recommends 5mg - 15mg per therapeutic dose for edibles.

Amount may vary depending upon patient tolerance and frequency of use. Results listed are total mg per medicinal item. Each item may contain several doses. Patients are advised to divide the medicine into portions to reflect a therapeutic dose. Edibles may take 1hr - 2hrs to begin full therapeutic effect. Do not increase dose until this time period has passed.

Thank you for having your product tested by BudGenius®.

Please remember to visit us online at <http://www.budgenius.com> and log into your account to view further ratings that your patients have reported about your products. You will also be able to send links, tweets, post on Facebook, and much more through the BudGenius® software. BudGenius® puts the dispensary in direct communication with their patients and experiences..