



Earheart of Long Beach

BudGenius® Strain Report™

BudGenius® StrainID: BG0010001ED6F
<http://budgeni.us/3MD>

Medical Cannabis Test Results

We certify that all testing has been completed utilizing appropriate equipment to report accurate THC, CBD, CBN ratings on this strain. BudGenius® has taken into consideration the natural variances of compounds throughout the marijuana plant.

Superman OG

By Earheart of Long Beach

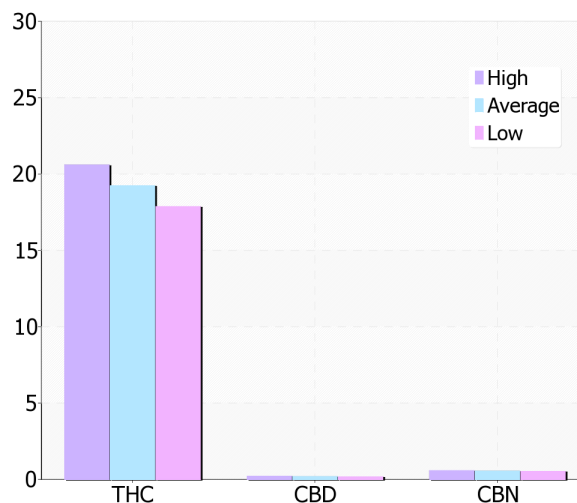
19.23% ^{THCd9} **0.19% CBD**
0.55% CBN

Valid Thru: Nov 6, 2011
Location: California
Genetic type: Indica
Grow Method: Indoor
Organic: Yes

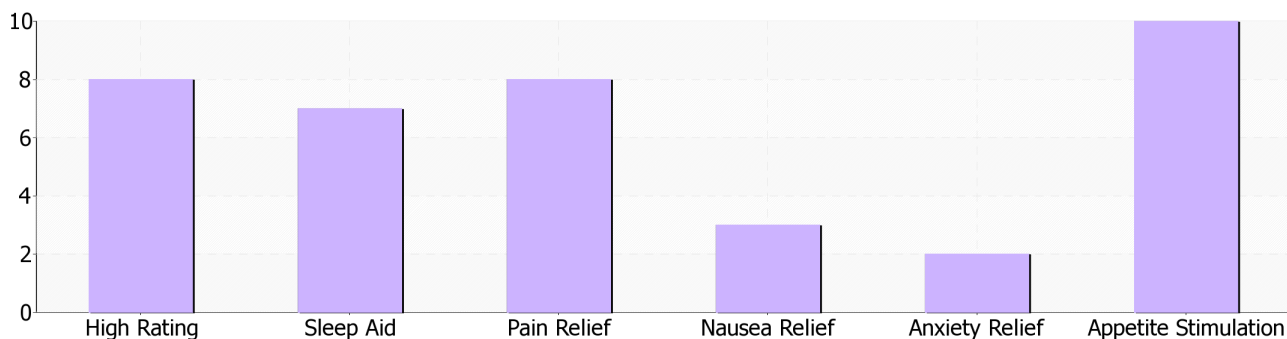
Pesticide Analysis

| Compound Name | PPM (ug/g) | Analysis |
|-------------------------|------------|----------|
| Fipronil | 0.00 | SAFE |
| Lambda-Cyhalothrin | 0.00 | SAFE |
| Bifenthrin Isomers | 0.00 | SAFE |
| Beta-Cyfluthrin Isomers | 0.00 | SAFE |
| Permethrin Isomer 1 | 0.00 | SAFE |
| Permethrin Isomer 2 | 0.00 | SAFE |
| Cypermethrin Isomer 1 | 0.00 | SAFE |
| Cypermethrin Isomer 2 | 0.00 | SAFE |
| Cypermethrin Isomer 3 | 0.00 | SAFE |

Cannabinoid Analysis



Pharmacological Effects Analysis



Thank you for having your product tested by BudGenius®.

Please remember to visit us online at <http://www.budgenius.com> and log into your account to view further ratings that your patients have reported about your products. You will also be able to send links, tweets, post on Facebook, and much more through the BudGenius® software. BudGenius® puts the dispensary in direct communication with their patients and experiences..